



CREATOR[®] 快捷

CREATOR CORPORATION (CHINA)







User's Manual
LAN G15 Programmable Touch Screen

V1.1

Meaning of the icons

■ Safety Instruction

Symbols are used in the Manual and devices, referring to the possible risk to users or others, as well as the damage to property, for helping you to safely and properly use the devices. The instruction and the implications are as follows. Please make sure your correct understanding of these instructions before using the Manual.

	<p>To remind user to conduct according to the attached operation and maintenance instructions. If ignore these information, death or injury could possibly happen.</p>
	<p>To remind the user that the risky uninsulated voltage in the device could caused electric shock to human.</p>
	<p>CE authentication indicates the product is in line with the EU safety regulation, and for assurance of safety use.</p>
	<p>SGS Authentication indicates the product has reached the QC standard of the global-biggest Swiss universe surveyor.</p>
	<p>This product has acquired the ISO9001 International Quality Authentication (Authentication authority: Germany Rheinland TUV)</p>
	<p>Caution: To avoid electric shock, please don't open the case, nor put the useless parts in it. Please contact with qualified service staff.</p>
<h2>■ General information instruction</h2>	<p>List the situation could cause unsuccessful operation or setup, and relevant information needed to notice.</p>

Important Notices



Caution

To ensure the device in reliable use and personal safety, please abide by the following items when in installation, use and maintenance:

Notice in installation

◆ **Please DO NOT** use the product in following places: the places with dust, oily smoke, electrical conductive dust, corrosive gas, inflammable gas; the places with high temperature, due, rain and wind exposures; the places endangered by shock and vibration. Electric shock, fire and incorrect operation could also cause damage and deterioration to the product.

◆ When conducting screw drilling and wiring process, **DO NOT** let metal irons and wire lead drop into the controller and air vent, which could possibly cause fire, failure and accidental operation.

◆ After finishing the installation, it is necessary to ensure there is no foreign matter including the packing material like contact paper on the ventilation surface, otherwise, it could cause poor heat dissipation while running, as well as fire, failure and accidental operation.

◆ Avoid conducting wiring and plugging in/out cable socket with electricity, otherwise, electric shock, circuit damage could easily happen.

◆ Installation and wiring should be firm and reliable. Poor contact could cause malfunction.

◆ With regard to the application situations with strong interference, shielded cable should be used for the input and output of HF signal, to improve the anti-interference performance of the system.

Note in Wiring

◆ **Installation** and wiring shouldn't be conducted until external electric power is cut off, otherwise, electric shock or device damage could happen.

◆ The product is grounded by the earth lead of the power cable. To avoid electric shock, the earth lead is necessary to be connected with the ground. Before making connection with the output end or input end of the product, please ensure it is correctly grounding.

◆ Upon finish wiring, remove the sundries. Please cover up the terminal plate for avoiding electric shock.

Note for Operation and Maintenance

◆ **Please DO NOT** touch the terminal when with electricity, otherwise, electric shock could happen.

◆ Don't clean up and screw the terminal tight before power is off. Such operation could cause electric shock when with electricity.

◆ **Please** turn off the power before connecting or disconnecting the communication signal cable, peripheral modules or control units, otherwise, device could be damaged and accidental operation could happen.

◆ **Please DO NOT** disassemble the device, so as to avoid internal electric components damage.

◆ It is necessary to read through the Manual and fully ensure the safety, before altering the program, trial running, starting and stopping operation.

◆ **Button** battery shouldn't be replaced before the power is off. If it has to be replaced when the device is running, it should be conducted by

professional electric technician wearing insulated gloves.

Note for declaration of worthless.

When declaring of worthless, please note

◆ Explosion of electrolytic capacitor on the circuit board could happen when burning it.

◆ Please classify and dispose it. Don't dispose it into household garbage.

◆ Please deal it as industrial waste, or in accordance with local environmental protection regulation.

Forward

User's Manual of LAN G15 Programmable Touch Screen primarily introduces the operation of CR-LAN G15, key functions and parameters, as well as common troubles shooting.

The Manual serves as user's operation instruction, rather than for maintenance service purpose. Since the date of release, any function or relevant parameter alteration will be in supplement instruction. Please refer to the manufacturer or dealers for inquiry.

CREATOR Electronics own the copyright of the Manual. Without permission, any unit or person shall not take part or total of the Manual for business purpose.

The copyright of the Manual is protected by *Copyright Law of People's Republic of China* and other Intellectual Property Law. Without written permission, any copy or distribution is prohibited.

Index

Chapter 1 Overview.....	1
1.1 System Introduction.....	1
1.2 Functions and Features.....	1
1.3 Regular Operations.....	1
1.4 LAN G15 Dimension.....	2
1.5 Installation of Touch Screen Driver.....	2
1.5.1 Touch Screen Driver under Windows XP.....	2
1.5.2 Touch Screen Driver under Other Windows Systems.....	4
Chapter 2 Touch Screen.....	5
2.1 Panel Instruction.....	5
2.2 System Configuration.....	5
2.2.1 Login Page.....	5
2.2.2 Main Page.....	6
2.2.3 Date & Time.....	6
2.2.4 LAN.....	7
2.2.5 Volume.....	7
2.2.6 Language.....	7
2.2.7 Power Manage.....	7
2.2.8 Misc Settings.....	8
2.2.9 About US.....	8
2.2.10 Exit.....	8
2.3 Use of TouchPanel G Series Software.....	8
2.3.1 Download (Update) Firmware.....	8
2.3.2 Update Data.....	9
2.4 System Connection Diagram.....	11
Chapter 3 Technical Parameters.....	12
Chapter 4 Common Troubles Shooting.....	13
Chapter 5 Maintenance	14

Chapter 1 Overview

1.1 System Introduction

CR-LAN G15 Programmable Touch Screen is with full-color super large display, communicated with PC via Ethernet port, with brightness sensor and infrared sensor, in 800X600 pixels, fast download of project, supporting 3D button effect.

CR-LAN G15 is compatible with the latest generation of PGMIII programmable host, with the following major advantages:

◆ Adopt high-End Touch Lens Technology

High-end Smooth Touch Lens technology perfectly integrate Lens with Touch Panel, making the surface of touch screen and case entirely smooth, with excellent hand-feel and outlook, as well as the features of long life, high recognition, advanced and beautiful structure. Also, the high degree of light transmittance determines good visual effect on the screen.

◆ Exquisite Outlook

Fashion and compact design, perfect combination of highlight and matte texture material, sbq quality alloy aluminum fiber-drawing, with distinct gradation.

◆ Intelligent Core

Dual-core CPU with GHz at 667mhz

◆ Adopt Wince System

Dual-control function, move your slim finger on screen at will, making everything so simple.

◆ USB 2.0 Download Mode

Adopt high-speed USB 2.0 for download, at

several dozen times of speed of USB 1.1, convenient for the download of programmed multiple language control picture and information picture.

CR-LAN G15 Wired Programmable Touch Screen is suitable for using in the command control centers at all scales, multi-media conference hall, multi-media classroom, luxury resort and hotel etc. One screen could help you to control everything easily.

1.2 Functions and Features

◆ 65K true color TFT LCD monitor, with resolutions of 800X600;

◆ Touch screen with size of 15.0 inches;

◆ Via RJ45 port, directly connect with CR-PGMIII control host to make a perfect control system;

◆ Wired control mode for direct communication with PC via Ethernet, with faster speed for project download.

◆ With jumping page and sub-page display function and Chinese-English Display;

◆ Programmable operation interface, graphic interface supports picture, graphic, text, vivid 3D animation and 3D button display effect;

◆ With touch screen coordinate correcting function;

◆ 1G memory;

◆ Adopt high-end Touch Lens technology, with

fashionable and beautiful outlook design.

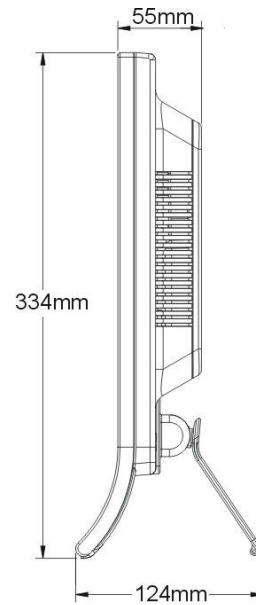
1.3 Regular Operation

◆ Turn on

Directly touch the screen area to turn it on.

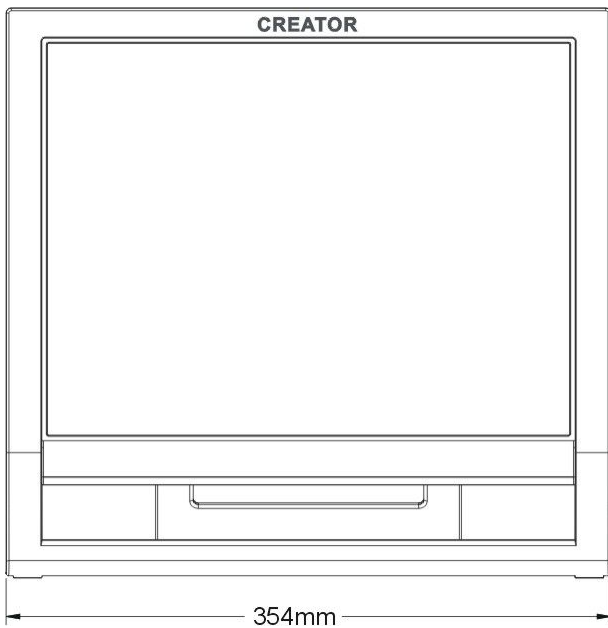
◆ Turn off

Configure the property setup of touch screen to delay power off.



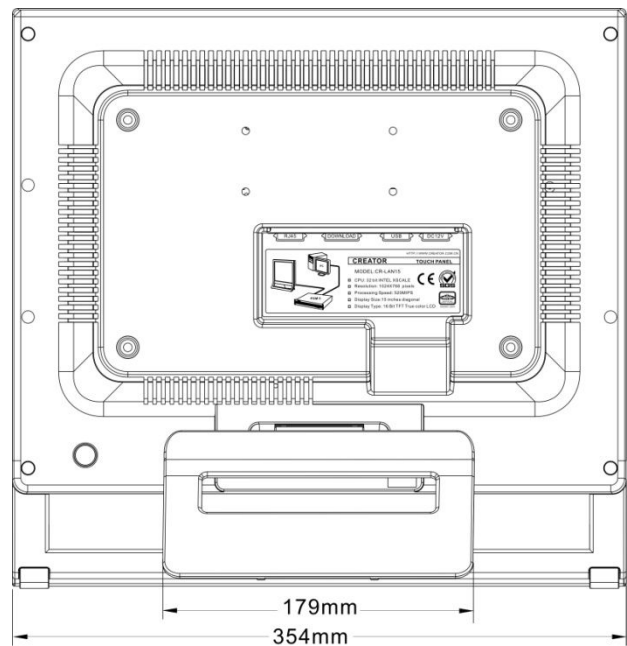
1.4 LAN G15 Dimension

Front view:



Side view:

Rear view:



Dimension of CR-LAN G15 Wired Programmable Touch Screen:

354 (L) X334 (W) X55 (H) mm

1.5 Installation of Touch Screen

图 1-2

Driver

1.5.1 Touch Screen Driver under Windows XP

1. Prepare the following objects: touch screen (complete touch screen, properly install the battery (not necessary)), 12V power, USB data cable, touch screen driver (driver is in CR-LAN G15 Driver folder), as picture 1-1:

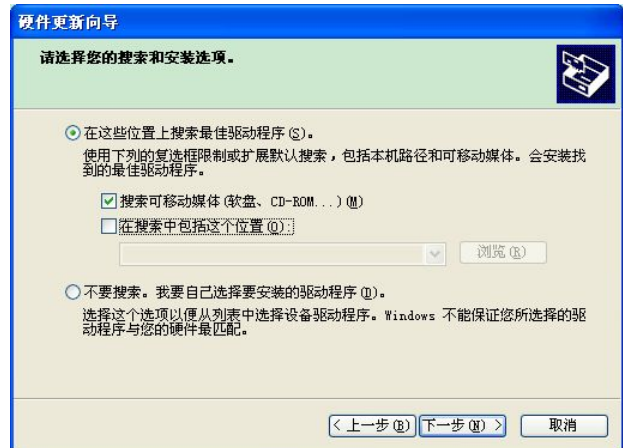


Picture 1-1

- To place the folder into the PC installed with ThinkDraw software, e.g. C: \CR-LAN G15 Driver
- Start touch screen, connect USB cable with PC, dialogue box of “new hardware detected” is prompted, as well as “Find new hardware wizard”, as picture 1-2:



4. Select “install from list or appointed position (premier)(s)”, click on “Next step” to see “hardware update wizard” dialogue box, as picture 1-3:

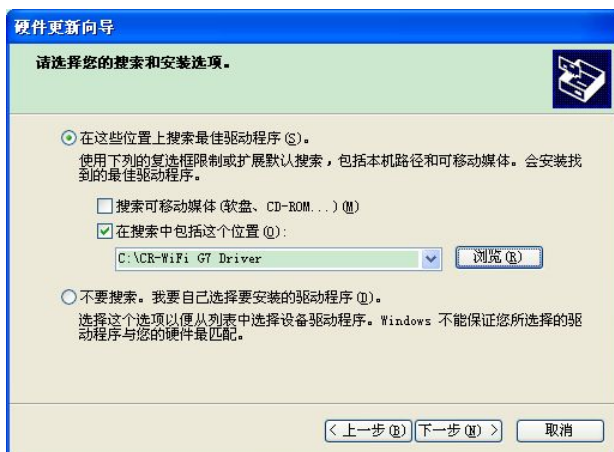


Picture 1-3

Remove the tick before “Search portable media (soft disc, CD-ROM), and then tick “include this position in searching (0)”, click on “Navigate” to select a saving path of the driver, click on “Confirm”, as picture 1-4 and picture 1-5:



Picture 1-4



Picture 1-5

5. Click on “Next step” to start installation of the driver, as picture 1-6:



Picture 1-6

6. click on “finish” to finish the installation of touch screen driver, then Creator_g7 will be displayed in device manager, as seen in picture 1-7



Picture 1-7

7. Open PC editing software Think Draw, customize your unique user interface and update it to touch screen for experience.

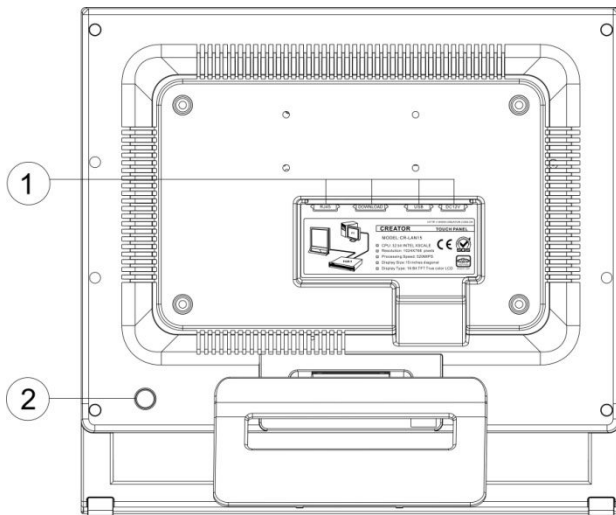
1.5.2 Touch Screen Driver under Other Windows Systems

Installation of touch screen driver in other Windows system is basically the same as that of Windows XP. We won't repeat the description.

Chapter 2 Touch Screen

2.1 Panel Instruction

Rear Panel:



- ① RJ45: Network port, for connecting to PC or central host.

DOWNLOAD : Download key, for system upgrade

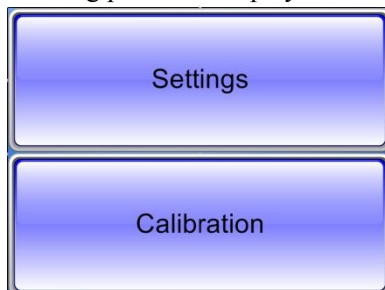
USB: USB port

DC 12V: Power input port, support DC 12V input of power supply to touch screen.

- ② System reset key.

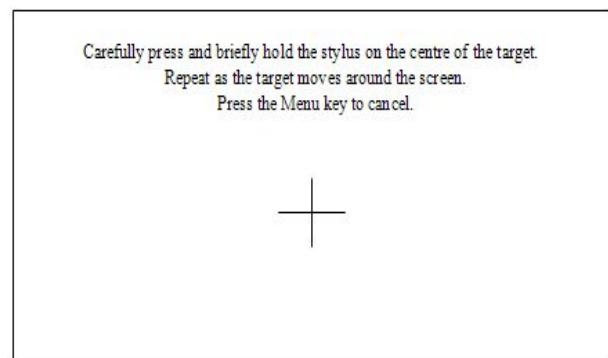
2.2 System Configuration

Press and hold the control interface of main program until the following picture is displayed:



Picture 2-1

1. Select Calibration key to have system calibration, as seen in the picture. And calibrate it as per the instructions.

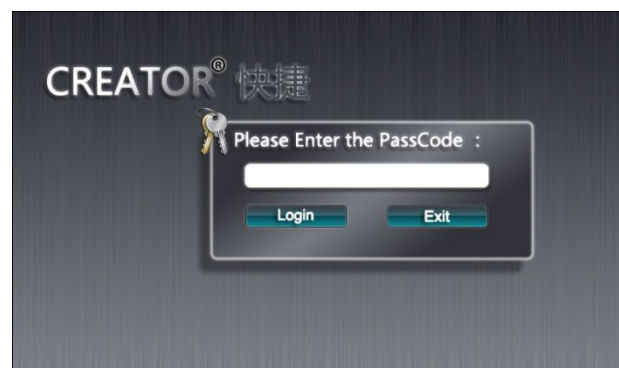


Picture 2-2

2. Select settings to access to background program, for detailed operation, please refer to 2.2.1

2.2.1 Login Page

1. Access to setting programs, you will see an interface as picture 2-3 when Pass code is needed:



Picture 2-3

2. Click on pass code input box to see a pop-up keyboard, as picture 2-4:



Picture 2-4

This keyboard comprises of input bar, characters zone and functional bar. Select your needed value in characters bar, you will see relevant digit displayed, with limitation of up to 20 characters. When finishing input, press confirm to exit, pass code “*” will be displayed in log-in dialogue box.

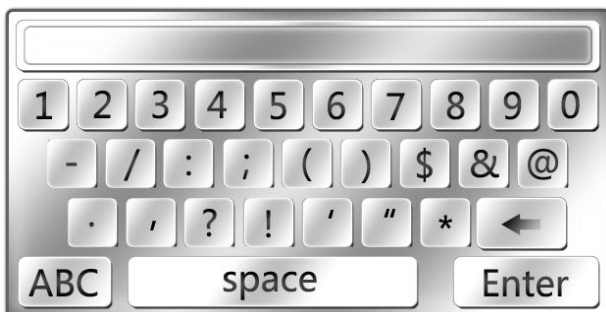
“SPACE”: Space key;

“ENTER”: Confirm key;

“←” Backspace key

“123”: This is an input method switching key.

Click on it to switch it into number and symbol selection interface, as picture 2-5:



Picture 2-5

“ABC”: This is input method switching key. Click on it to switch it into English character selection interface, as picture 2-4.

3. After finishing input, press “Login” key to directly access to setting main page if with correct pass code, otherwise, you will be asked to re-input it.

4. “Exit” key is for the exit of system setting program.

2.2.2 Main Page



Picture 2-6

1. As seen in picture 2-6, the main page comprises of the options of Date & Time, Wi-Fi, Volume, Language, Power Manage, Misc Settings, About US and Exit, touch the option to access to respective setting interface.

2. Touch the screen, catch the focus on corresponding option, move away (while not away from the screen) to lost the focus, access to the focus of the option when leaving screen. If focus is not on any option, no any operation will be taken.

3. Select Exit to leave setting program, at the meantime, Control Center is started.

2.2.3 Date & Time




Picture 2-7

1、 As seen in picture 2-7, the page is for adjusting date and time, with date ranging from the year 2009 to 2049.

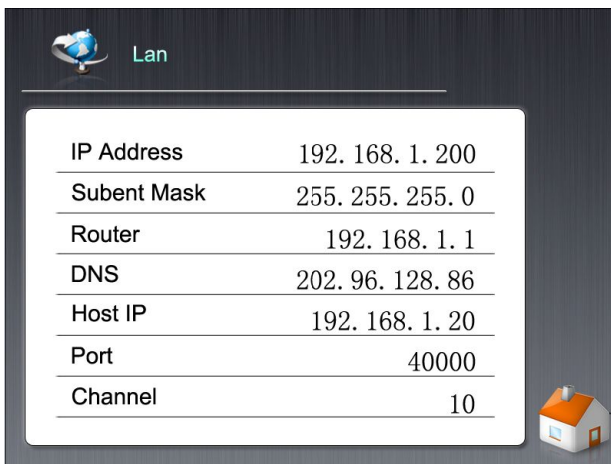
2、 Touch the relevant area of date and time, it will be activated.

3、 When leaving in activated state, adjustment pulley pops up at the right side (as seen in picture 2-7).

4、 When adjusting the right-side pulley, the corresponding region is displaying the adjustment state in real time, but without taking effect. Click on the right-top button on the pulley to confirm the operation, if not, the alteration will be abandoned.

5. Press the right-bottom icon  to return to main page.

2.2.4 LAN




Picture 2-8

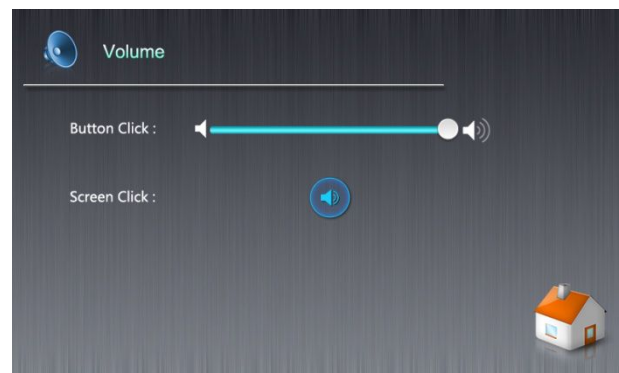
1. In main page, click on LAN icon to access LAN configuration interface, as seen in picture 2-8.

Corresponding parameters are displayed at right side, such as the local IP, subnet mask, gateway, DNS, host IP, port and channel.

2、 When you need to alter the network parameter at right side, click on corresponding parameters region to see a pop-up keyboard, input you desired value, press enter key to confirm it. If it is void, original value will be kept and preserved.

3、 Press right-bottom icon  to return to the main page.

2.2.5 Volume




Picture 2-9

1. As seen in picture 2-9, the page is for adjusting the button click volume and turning on/off screen click sound.

2、 Drag button click volume adjustment bar(min at left, max at right)

3、 Click on the switch to turn on/off screen sound.


4. Click on right-bottom icon  to return to main page.

2.2.6 Language

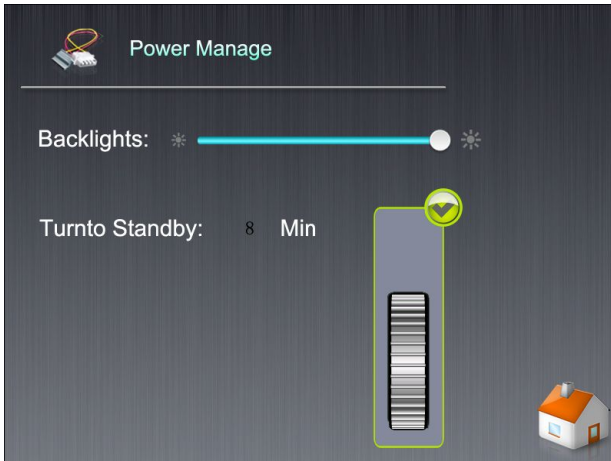


Picture 2-10

1. As seen in picture 2-10, the page is for selecting language on the screen. Click on the desired language, which will take effect after exiting this page. (Temporarily only with English available, other languages will be added later on).

2. Click on right-bottom icon  to return to main page.

2.2.7 Power Manage




Picture 2-11

As seen in picture 2-11, the page is about power management, for adjusting the backlight of touch screen, stand-by time and battery indicator, if battery is installed, and if using external power for battery charging.

1. In backlights option, drag the bar to adjust the brightness of backlights.

2. Click on *Turn To Standby* digit region to see an pulley for adjusting standby time (0 to 10 minutes). System initial value is 8 minutes, i.e. accessing to digital album after 8 minutes.

Rotate playing the pictures in appointed local or mini SD card folder, and shut down the screen after 2 minutes, automatically power off the device after further 10 minutes.

3. Click on right-bottom icon  to return to main page.

2.2.8 Misc Settings




Picture 2-12

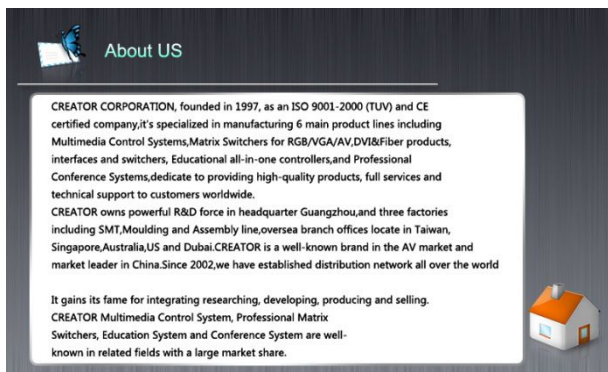
As seen in picture 2-12, this page comprises of miscellaneous settings, for password setup and resets of Wi-Fi parameters, volume, language and power management.

1. Click Set Password to see a pop-up keyboard, input password. If it is void, password will be cancelled---starting setting won't access to log-in page.

3. Others are for the respective resets of factory default. Click on it and follow the instruction (input "ok" to confirm reset). The system will prompt your successful operation, otherwise, it is ineffective.


3. Click on right-bottom icon  to return to main page.

2.2.9 About US



Picture 2-13

As seen in picture 2-13, this page displays the history of our company and contacts (subject to you need), without making any configuration.

Click on right-bottom icon  to return to main page.

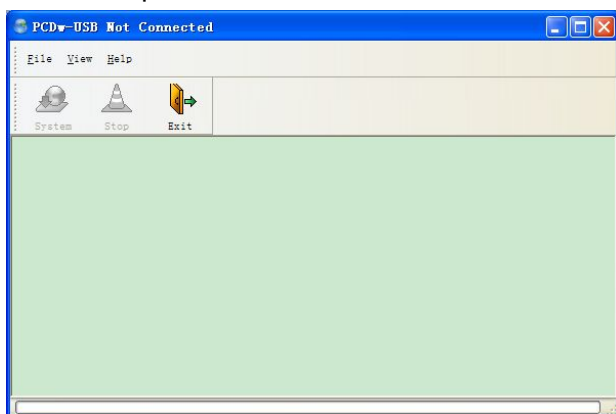
2.2.10 Exit

Exit this program to return to control interface.

2.3 Use of Touch Panel G Series Software

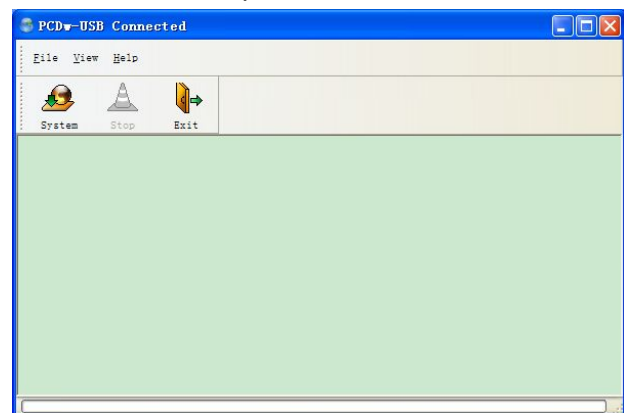
2.3.1 Download Update) Firmware

Prepare the following objects: touch screen **【**complete touch screen, install battery in correct way(not necessary)**】**, 12V power cable, USB data cable, PC download software-Downtool (integrated into PC editing software-ThinkDraw), as seen in picture 2-14:



Picture 2-14

1. Correctly connect to power and USB data cable, run the system, software system icon is on, as seen in picture 2-15



Picture 2-15

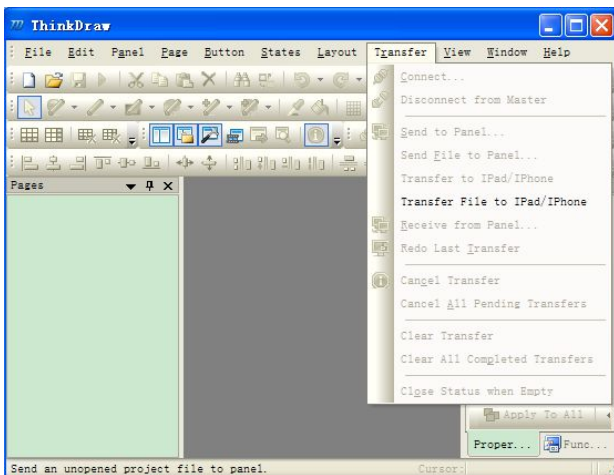
2. Press and hold the menu key at the right-back of touch screen, restart the screen to see **Update is Ready ...**.

The device status of PC download software shows "Date", "System", "Exit". When "Stop" icon is in grey, the device is connected and ready for system update.

3. Press the "System" key in PC software, select the firmware file to update, **Update is Started ...** appears, until the download is finished with following prompt **Update is Completed ...**.

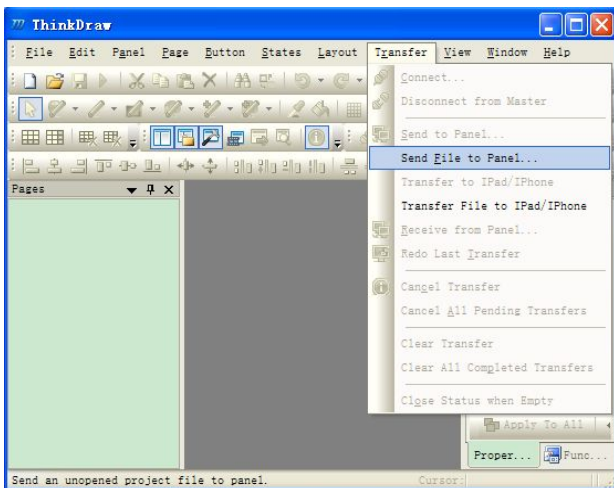
2.3.2 Update Data

Prepare the following objects: touch screen **【**complete touch screen, correctly install battery (not necessary)**】**, 12V power, USB cable, PC edition software-ThinkDraw (Update user interface is integrated into ThinkDraw), as seen in picture 2-16:



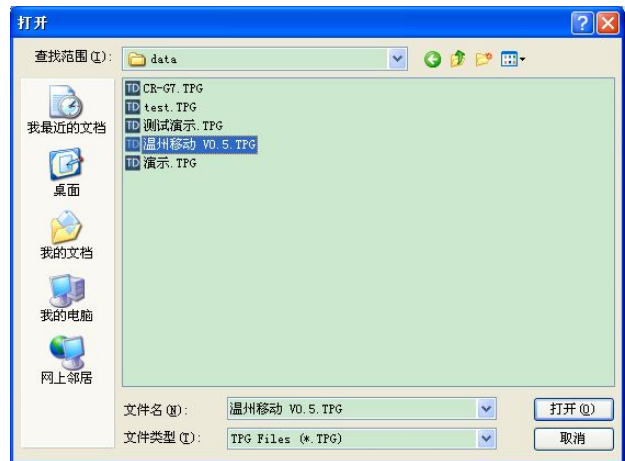
Picture 2-16 ThinkDraw Editing Software Interface

1. Correctly connect to power and USB cable, run the system to see “Transfer--> Send File to Panel” is activated, as seen in picture 2-17:



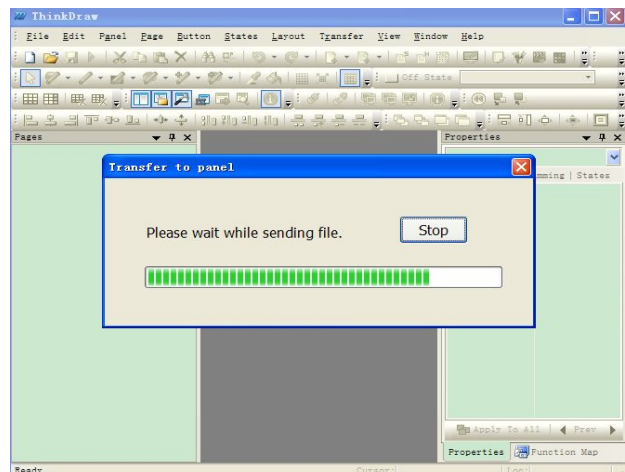
Picture 2-17

2. Select “Transfer--> Send File to Panel” to see an “open” pop-up dialogue box. Choose to update file and then click on “open” button, as seen in picture 2-18.

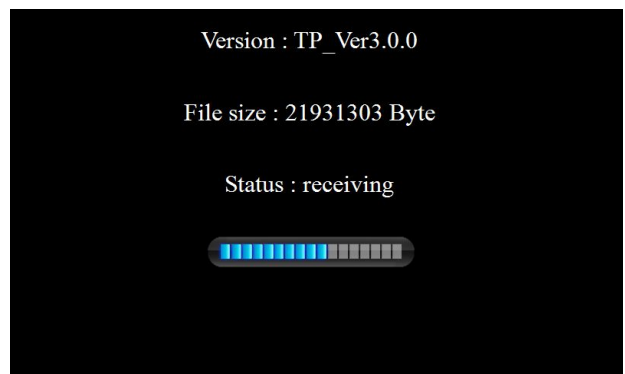


Picture 2-18

3. PC editing software ThinkDraw will display the process of data transmission, as seen in pictures 2-19 and 2-20.



Picture 2-19



Picture 2-20

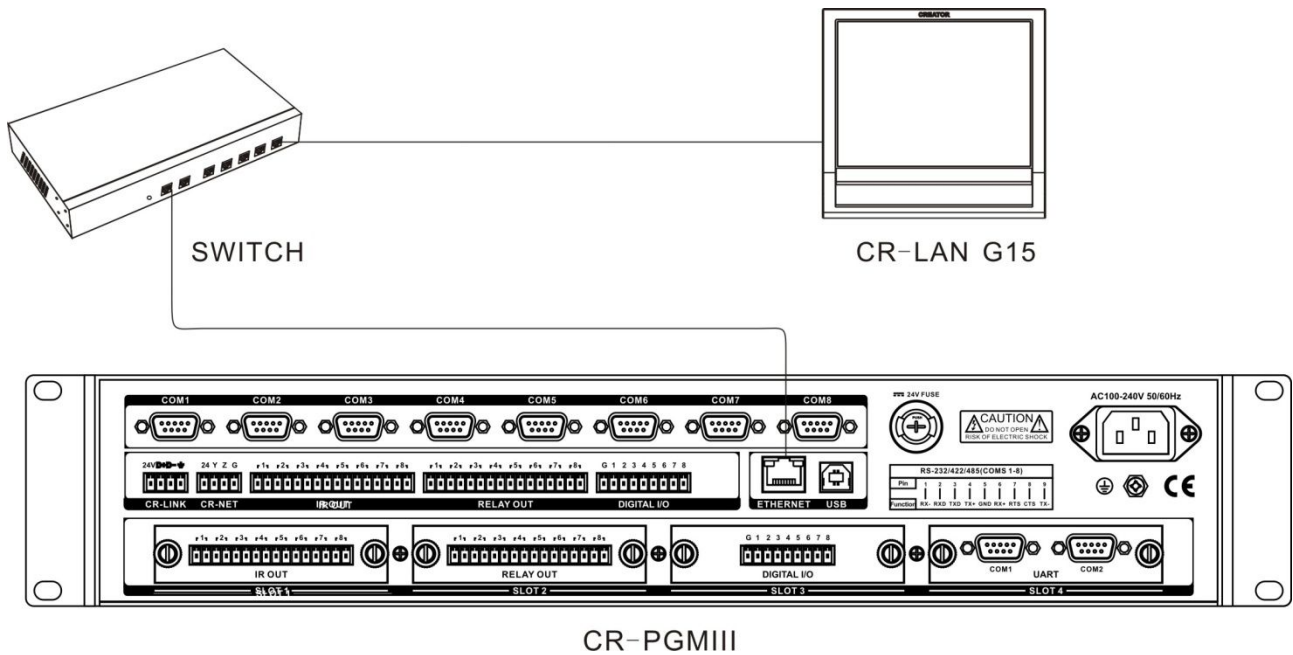
Version is about the system version. File Size

refers to the size of update data. Status refers to current states. And the bar indicates the percentage of current running process.

4. When finishing update, the program will automatically jump to control interface.

For other operations about programmable touch screen software—ThinkDraw, please refer to *User's Manual of Touch Panel G Series*.

2.4 System Connection Diagram



Chapter 3 Technical Parameters

Parameters	CR-LAN G15
Display mode	TFT LCD true color
Screen resolution	800X600
Control mode	Wired
Application range	For connecting to CR-PGMIII control system
Touch screen backlight	LED
Communication port	Ethernet port
Memory	1G
Radio transmission frequency	Wired
Distance of remote control	> 100m
Control mode	Wired control
Dimension (mm)	354LX334WX55D
Weight	4000g
External power	DC12V/3.3A

Chapter 4 Common Troubles Shooting

Failure	Resolution
Host cannot be controlled by touch screen	<ul style="list-style-type: none"> • Check to see if the Join No. value of touch screen project button is the same as that in host program; • Check to see if touch screen ID the same as that of touch screen in host program; • Check to see if the receiver and control host are correctly connected by cable. • Check to see if the receiver is installed with antenna, if the touch screen and receiver are within effective distance. • Check to see if the receiver can control the touch screen in short distance, if not, maybe one of them is out of order, please refer to the professionals for maintenance.
PC is unable to download program for touch screen	<ul style="list-style-type: none"> • Check to see if USB data cable is correctly connected; • Check to see if the driver of touch screen has been successfully installed. Reinstall the driver to resolve the problem; • Check to see if touch screen user program is with the same model as touch screen; • Check to see if USB port in PC can work normally; • Check to see if the touch screen has been connected to power and turned on.
No display on touch screen	<ul style="list-style-type: none"> • Maybe battery power in touch screen has run out, please recharge it; • When the touch screen is recharging power, please make sure the power adaptor has been correctly connected; • Check to see if touch screen battery has been improperly installed. If yes, please take it out and reinstall it.
No response after touching touch screen button	<ul style="list-style-type: none"> • Maybe the touch screen is with drifting phenomenon, please access to the setup page to re-adjust the coordinate; • In touch screen user program, check to see if the button is mistaken by text, alter the button to resolve the problem. • Check to see if power is running out in touch screen, recharge it in due course.

Chapter 5 Maintenance

- 1、 Use soft dry cloth to wipe out the dust on touch screen;
- 2、 Avoid placing the touch screen under sunshine, but it should be placed at dry area.
- 3、 Please keep good ventilation at the place where touch screen is working, avoid using it under direct sunlight and humidity.
- 4、 Please avoid using sharp, coarse or hard object to hit on the surface of touch screen, finger and special touching pen are recommended for touching;
- 5、 Use appropriate strength when touching screen. Hitting with excessive strength could destroy the screen;
- 6、 Touch screen battery is for touch screen only. Use for other purpose could damage the battery;
- 7、 The battery has a certain lifetime of use. Repeated power charging will shorten the lifetime of battery;
- 8、 When not in use for a long time, it is recommended to take out the battery, and pack it with plastic sealed bag for reservation in dry and cool places.
- 9、 Do not put the old battery with general waste, as avoiding danger.

CREATOR CORPORATION (CHINA)
Copyright by CREATOR

Last Revision: 09/2011